

typology	Vegetable tanned bovine saddle-hide
thickness	2.4/2.6 mm
height	750 gr/mtl
weight	~2.000 gr/sqm
fire resistance	11M, UNI 8456 (1987), UNI 9174 (1987), UNI 9174/A1 (1996), UNI 9177 (1987)

washing information The upholstery is in totally natural, prime quality full grain saddle-hide. It is very sensitive: be careful of liquids or other substances that could alter the colour of the leather, and also of metallic or sharp parts that could leave marks on the surface.

cleaning and maintenance Only use specific leather cleaners. / Avoid direct exposure to sunlight and sources of heat. / Avoid contact between light and dark colours, and between different materials. / Dust with a soft dry cloth.

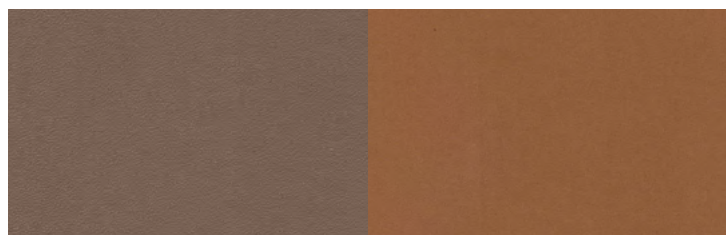
Legenda

	Hand wash. Delicate wash. Maximum temperature: 30°/40°. Use neutral soap without optical whiteners.
	Dry clean only. Do not wash in water. Treat with care when damp.
	Machine wash up to 40°.
	Dry cleaning with perchlorethylene, chlorinated solvents and mineral essences (perchloroethylene solvents, hydrocarbons, R113 and R11). The garment is washable with normal procedures but without the use of trichlorethylene (or trichlorethylene).
	Dry clean with tetrachloroethylene, monofluorotrichloromethane, trifluorochloroethane, hydrocarbons. Severely limit the amount of water added and/or the mechanical action and washing and drying temperatures. Do not dry clean at automatic coin-operated laundry facilities.
	Do not dry clean.
	Dry clean with hydrocarbons and trifluoro-trichloroethane.
	Do not tumble dry.
	Warm iron (max 110° C)
	Warm iron (max 150° C)
	Do not iron.
	Iron on the reverse side.
	Do not use chlorine bleach.
	Tumble dry.
	Wet-cleaning.

CO	cotton
LI	linen
PA	polyamide
PC	acrylic
PES	Polyethersulfone
PL	polyester
PP	polypropylene
PU	polyurethane
RA	rami
SE	silk
VI	viscose
WO	wool
WS	cashmere
WW	virgin wool

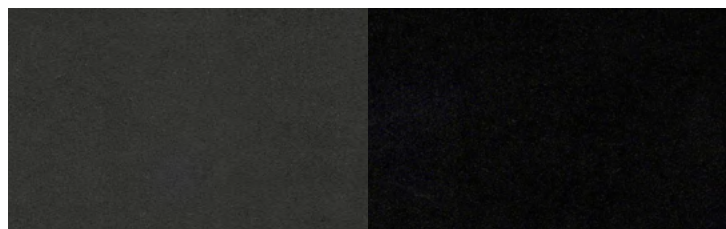
Saddle-hide

Variants



R906 col.29

R904 col.26



R903 col.03

R900 col.02