

100% Recyclable.  
 100% Non toxic (EU and USA standard).  
 Anti-allergic.  
 Resistant to fungus, bacteria, sunlight, humidity, chlorine, food stains and sweat.  
 Compatible with delicate baby skin.  
 Eco-friendly (low energy for cleaning, long lasting life cycle, easy to use).

typology	<b>Fabric</b>
category	<b>F</b>
composition	<b>88%PP 20%PL</b>
height	<b>cm 138</b>
weight	<b>920 gr/mtl</b>
martindale	<b>50.000</b>
pilling	<b>4/5</b>
light fastness	<b>5/7</b>
fire resistance	<b>Fire resistance: TB117-2013 / Cigarette BS5852.1.1979</b>

washing information



## Legenda

	Hand wash. Delicate wash. Maximum temperature: 30°/40°. Use neutral soap without optical whiteners.
	Dry clean only. Do not wash in water. Treat with care when damp.
	Machine wash up to 40°.
	Dry cleaning with perchlorethylene, chlorinated solvents and mineral essences (perchlorethylene solvents, hydrocarbons, R113 and R11). The garment is washable with normal procedures but without the use of trichlorethylene (or trichlorethylene).
	Dry clean with tetrachloroethylene, monofluorotrichloromethane, trifluorochloroethane, hydrocarbons. Severely limit the amount of water added and/or the mechanical action and washing and drying temperatures. Do not dry clean at automatic coin-operated laundry facilities.
	Do not dry clean.
	Dry clean with hydrocarbons and trifluoro-trichloroethane.
	Do not tumble dry.
	Warm iron (max 110° C)
	Warm iron (max 150° C)
	Do not iron.
	Iron on the reverse side.
	Do not use chlorine bleach.
	Tumble dry.
	Wet-cleaning.

CO	cotton
LI	linen
PA	polyamide
PC	acrylic
PES	Polyethersulfone
PL	polyester
PP	polypropylene
PU	polyurethane
RA	rami
SE	silk
VI	viscose
WO	wool
WS	cashmere
WW	virgin wool

# Delta

Variants

CAT.F



R692 col.015

R691 col.02/1

R698 col.80/1



R693 col.01/1

R694 col.03



R695 col.03/1

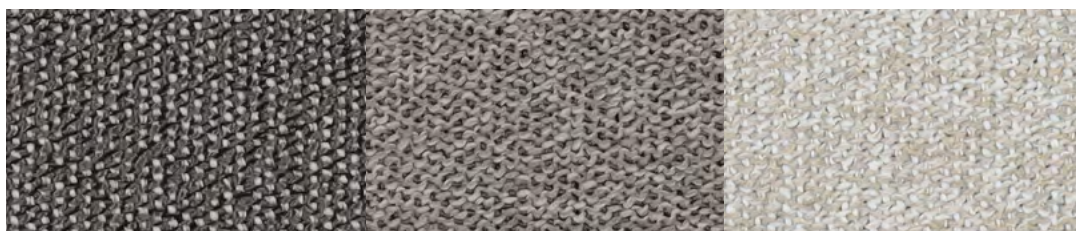
R696 col.02/3

R697 col.15/1



R699 col.01/6

R700 col.80



R720 col.01/5

R721 col.90

R722 col.01

# Delta

Variants

CAT.F



R723 col.02

R724 col.45



R725 col.45/1

R726 col.01/3

R727 col.01/4